



Mt. Vernon Early
Learning Academy



MMP: WHO ARE WE?

A^BC

Mini-Marauder Preschool Staff

27 MMP staff; 15 who are new this school year

7 classrooms: 3 three-year-old classes and 4 four-year-old classes

- 7 lead teachers (1 of which is licensed in Special Education)
- Each class has 1 assigned Instructional Assistant
- 1 additional licensed Special Education teacher and 1 Special Education IA who push into classes to provide services
- 3 part-time Instructional Assistants
- 5 MVHS ICE Students
- Support from speech pathologists, occupational therapists, physical therapists, and the school psychologist

OUR DAILY SCHEDULE

We provide students daily...

- Free-choice play in 10 centers
- Literacy block -- reading/writing, math, and science
- 2 visits to the playground or gym and 1 visit to our gross motor room
- Community meetings with social emotional lessons



OUR STUDENTS

40

3-YEAR-OLD STUDENTS

Girls total 17.
Boys total 23.

69

4-YEAR-OLD STUDENTS

Girls total 26.
Boys total 43.

28

PART-TIME STUDENTS

Attend either morning
or afternoon. Or fewer
than 5 days a week.

43

STUDENTS WITH DISABILITIES

Identified with an
Individualized Education
Plan (IEP).

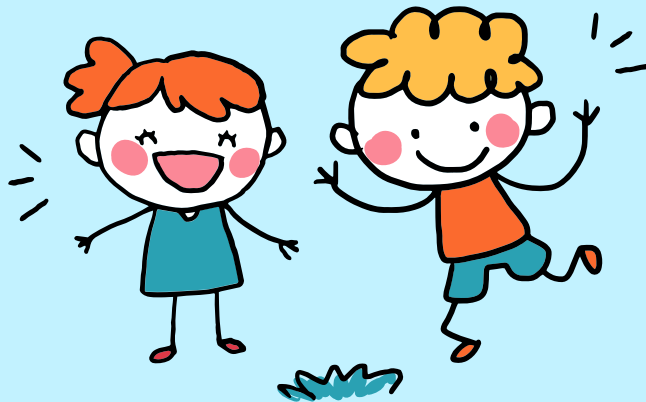
WE PROVIDE STUDENTS...

NUTRITIONAL MEALS AND SNACKS

Students are served
breakfast, lunch, and morning
and afternoon snacks.

ACADEMIC DAY WITH AFTERCARE

7:45 am - 2 pm academic day
2 - 4:30 pm aftercare



TUITION ASSISTANCE

We accept CCDF vouchers
and offer Build, Learn,
Grow Scholarships.

PATHS TO QUALITY LEVEL 3

Indiana's statewide quality
rating system for early
education.



The Mini-Marauder Preschool
strives to be an extension of
Mt. Vernon CSC, seeking to
provide readiness for a smooth
transition to kindergarten.

ASSESSMENT

TEACHERS WORKED LAST YEAR TO CREATE NEW ASSESSMENTS FOR PRESCHOOL AND PRE-K. THESE ASSESSMENTS ALIGN WITH THE INDIANA EARLY LEARNING FOUNDATIONS. INCLUDED ARE STANDARDS IN

- SOCIAL-EMOTIONAL AND PLAY SKILLS,
- EARLY NUMERACY SKILLS,
- EARLY LITERACY AND WRITING SKILLS,
- FINE AND GROSS MOTOR



PROFESSIONAL LEARNING COMMUNITIES (PLCs)

TEACHERS ARE MEETING WEEKLY IN PLCs TO ENGAGE WITH ONE ANOTHER, INCLUDING OUR SPECIAL EDUCATION STAFF TO DISCUSS STUDENT PROGRESS AND USE DATA TO INFORM INSTRUCTION. THEY ARE SHARING IDEAS AND LESSONS TO CONTINUALLY IMPROVE INSTRUCTION.



PROFESSIONAL DEVELOPMENT AND CURRICULUM

WE ARE UTILIZING RESEARCH-BASED EARLY LEARNING CURRICULUM.

CURRICULUM:

- **3s:** MADE FOR ME MATH, MADE FOR ME LITERACY, HANDWRITING WITHOUT TEARS
- **4s:** READ IT AGAIN PRE-K, HEGGERTY PHONEMIC AWARENESS
- **All:** TBRI NURTURE GROUPS, SECOND STEPS SEL





THANKS!

Do you have any questions?

Heather Johnson

317-485-3100, ext 5335

heather.johnson@mvcsc.k12.in.us



CREDITS: This presentation template was created by **Slidesgo**,
including icons by **Flaticon**, infographics & images by **Freepik**

